



REALIS

2018 - 2019

CUSTOM BAITS CATALOGUE



www.duo-international.com



www.facebook.com/RealisUSA



www.instagram.com/DUOJPN

NIPPON QUALITY
DUO
International

✉ martin@duo-inc.co.jp

701 Kamikosugi, Yaizu, Shizuoka, 421-0201, JAPAN

tel +81 54 291 7730 fax +81 54 291 7731

©2018 DUO CO.,LTD. All Rights Reserved.

2018 - 2019

CUSTOM BAIT S CATALOGUE

DUO CONCEPT

- 02 PRESIDENT MASAHIRO ADACHI
TOTAL PACKAGE CONCEPT
04 PT.1 DESIGN & DEVELOPMENT
06 PT.2 OUR COMMITMENT TO NIPPON QUALITY
-

REALIS

- 08 SPYBAITING
10 REALIS SPINBAIT80/90/80 G-Fix
12 REALIS SHINMUSHI SERIES **NEW**
14 REALIS V-TAILSHAD3"/4" **NEW**
16 REALIS × AARON MARTENS COLLABORATION **NEW**
18 REALIS CRANK G87 15A/20A / G-Fix
20 REALIS CRANK M62 5A • M65 8A/11A / M Line
21 REALIS ONIMASU188F/188S
22 REALIS JERKBAIT100DR/100SP/110SP/120F
24 REALIS JERKBAIT120SP
25 REALIS JERKBAIT SW/PIKE LIMITED
26 REALIS VIBRATION62/68 / G-Fix
28 REALIS PENCIL85/110/130
29 REALIS PENCIL WT / SW LIMITED
30 REALIS POPPER64
REALIS PENCILPOPPER110/148
31 REALIS ROZANTE63SP/77SP / Grade A
REALIS SPIN 5g/7g **NEW**
32 REALIS SHAD52MR/59MR/62DR
REALIS MINNOW80SP
33 REALIS FANG OPS CONCEPT
34 REALIS FANGBAIT SR/DR EDITIONS
35 REALIS FANGBAIT PIKE / SW LIMITED
36 REALIS FANGPOP105/120 **NEW**
37 REALIS FANG OPS PROTOTYPES **NEW**
-

OTHER

- 38 REALIS DEPTH CHART
40 REALIS ACTUAL SIZE
42 ORIGINAL ACCESSORIES
45 INTERNATIONAL PRO STAFF



CEO & CHIEF DESIGNER

Masahiro Adachi

Since its inception, DUO has forged a 20-year standard in lure manufacturing that has utilized future technologies and innovation. A company beyond its time, the DUO concept of commitment and quality is unprecedented and attained only at the highest level of execution and clearly exceeds today's perceptions.

The personification of this philosophy is DUO's CEO and chief designer, Masahiro Adachi, one of the most respected lure designers in Japan.

Masahiro Adachi's designs were first introduced in the early 90's when he shocked the lure world with his engineering. Adachi's designing process originates from thought, but his understanding of lure action developed from studying the intricate swim behavior of live bait-fish. Another vital element to Mr. Adachi's gift is his detailed understanding of predator fish and their biology. Mr. Adachi's philosophy of "functional beauty" means he is trying to create lures that both unify in form and function, making lures that are creatively known as "better than the real one".

Adachi does not create lures in the traditional JDM way with the use of drawing and CAD. Rather, every creation begins as a carving. Adachi mentally envisions the swim-action of his lure and begins carving a design from ABS plastic. The process could be considered organic. Mr. Adachi's designs are original, sometimes so intricate that they require months to perfect.

The integration of hand created designs and high precision digital constructs are imperative priorities for the creator, Mr. Adachi.

This approach will remain a trademark for DUO lures.

アドチ

TOTAL PACKAGE CONCEPT

Design & Development

Since its foundation over twenty years ago, DUO has set on a path to represent the very best in lure fishing. The commitment to the highest level of quality has been built into the concept of the company, and DUO has continuously pursued the cutting edge technology for lure development.

Each of the DUO lures combines advanced technology with the human touch; the attention to detail is combined with the preciseness of the machine and each lure carries the fingerprints of tens of people's hands it goes through during the production process.

From the very first idea, the very first draft, up to the sealing of the package, DUO always sets out on a mission to push the levels of creativity, and provide a perfect tool. "The Total Package" concept has been the philosophy of DUO since its inception and the foundation which it was built on.

"Total Package" means unifying all the processes under one roof, being able to offer you product of higher quality, each with its own identity, carefully quality checked at a better value. It means paying attention to every little detail of the lures, unifying both the form and function into a perfect harmony.



1 Production of the Master

Mr. Adachi avoids use of computers for the initial body master, and carves from a block of ABS. The advantage is that it combines strength and rigid properties, as well as the rubbery toughness and specific gravity of the actual product.



2 Carved Electrode Manufacturing

Based on the action sample, outline data is measured to cut out a pillar shaped pure-copper electrode. The initial shape is formed by belt sander and the electrode is refined with a precision drill.



3 Rib Processing

The interior volume of the cavity is produced and the fixed interior space is directly carved out to create the planned rails and space for ballast.



4 Obtaining the First Injection Body Sample

The first injection bodies are created and tested for integrity and harboring components. Tolerances must be exact for ballast, hook positioning and lip angle. Once product passes precise testing, production is commenced.



5 Fusion

DUO utilizes a detailed time intensive process called "Fusing". MEK chemical fusing is accomplished by micro fusion, which actually melts body seams together creating a stronger and water-tight unit. The bonded units are then placed in curing pin to complete a strong unitized form.



6 Water Intrusion Test

To test the integrity of the adhesion, lures are water tested, immersed into hot water exceeding 70 degrees for around 20 seconds. The hot water makes the air expand within lure cavity and imperfection are detected quickly. For example leakages are identified when bubbles are produced and thereby can be rectified immediately.



7 Multi-Step Painting

DUO painting is accomplished manually, one step, one layer at a time. The complexity of coating is also time intensive and expensive, but necessary. DUO's staff will coat a lure between 5 to 15 layers of paint depending on the lure and its tasks. There are over 400 variations of colors available in the catalogue.



8 Top Coat & Quality Control

After an additional quality control inspection has been completed, a measured clear coat is added to protect the integrity of the paint. The lures pass through multiple layers of clear coat application. Once inspection is completed, the lure's name is printed and sent to packaging for distribution.

FOUNDATION FOR THE FUTURE

Our Commitment to Nippon Quality

For decades the name DUO International has been synonymous with Japan's premier lure market, and to this day DUO continues to embrace the JDM (Japanese Domestic Market) platform with honor. A deep desire for DUO's advanced lure innovation has radiated throughout the international community. Countries across the globe have garnered an insatiable appetite for some of the most sophisticated lure development known to angling. Our concepts and outcomes in lure advancement resonated with the experienced angling-ship across oceans, rivers and lakes. A commitment to our global strategy created in 2011.

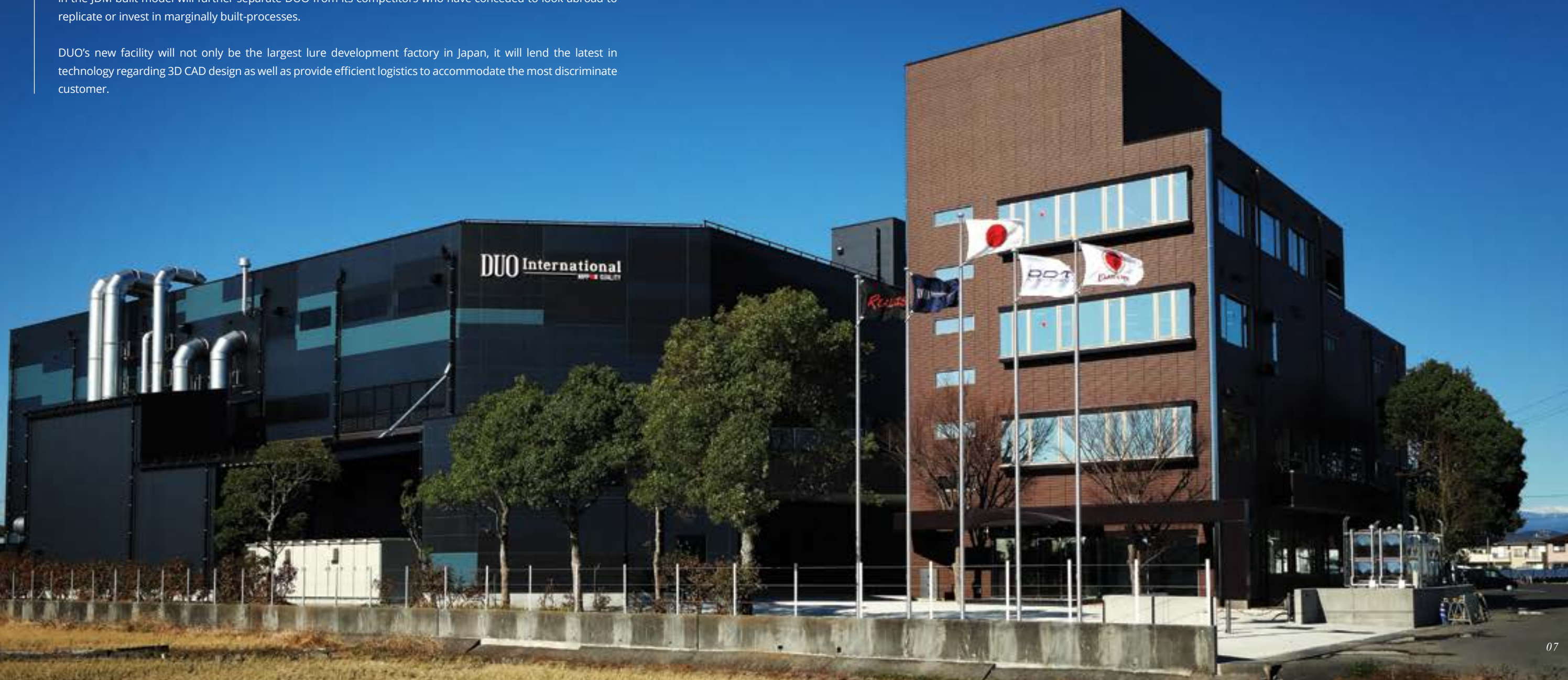
As we embark on 2018, DUO is prepared to reach far beyond its boundaries. Creating the largest lure development factory in Japan exemplifies DUO direction. It's a complex large enough and advanced enough to blend raw craftsmanship, with innovative technology and refined function.

This new state of the art super-plex will be able to facilitate the growing needs of the worldwide market. Staying in the JDM built model will further separate DUO from its competitors who have conceded to look abroad to replicate or invest in marginally built-processes.

DUO's new facility will not only be the largest lure development factory in Japan, it will lend the latest in technology regarding 3D CAD design as well as provide efficient logistics to accommodate the most discriminate customer.

DUO is a continuation of a story about passion, pride, innovation, evolution and the relentless drive to perfection, a road far less traveled by others. It's the story of a resolute commitment to Nippon Quality.

34°49'18.0"N 138°16'45.5"E
YAIKU, SHIZUOKA PREFECTURE, JAPAN





EXTEND YOUR GAME

DUO's Lure Refinement

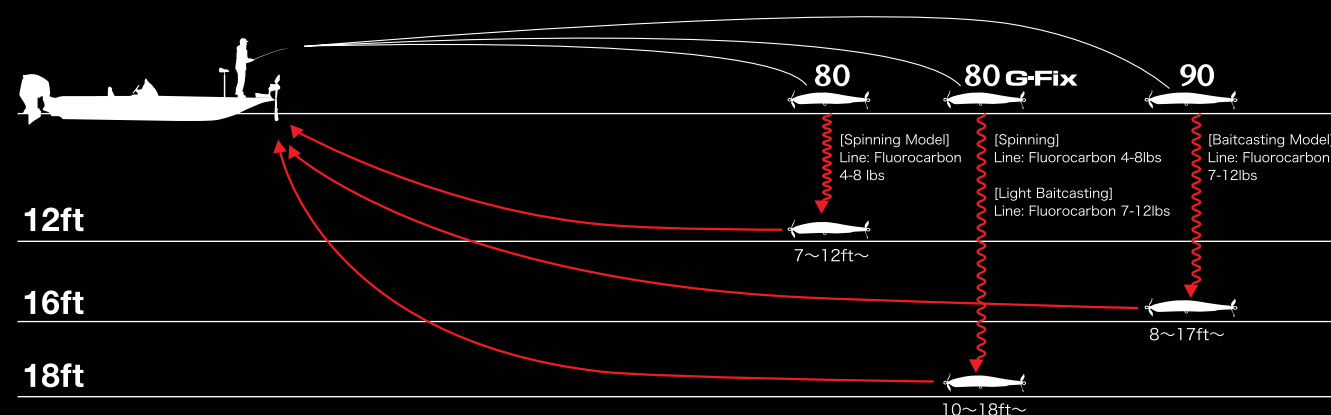
The company's draw to create the Spinbait was an unprecedented focus on innovation. DUO's version carried a multitude of traits. These traits allowed the lure to have excellent casting trajectory due to low drag co-efficiency. The Spinbait's advanced ballast system provided precise sub-surface tracing. The body's inner structure and componentry released audible, physical, and visual actions like pitch and compressed vibration from the propellers called Micro-pulsing. The lure's ability to create a soft, turbid flow of water along the body was named Plum-effect. Its unique listing motion was called Body Flash. The lure's quiver-shimmy action is known as Passive Minnow Vibration. The result was a lure that triggered bass' neural network while it displayed a regulated, non-stressed behavior.

The Concept

The exact origin of using sinking lures with props in Japan is unknown but many report it occurred in parts of Tokyo, Chiba, and Yokohama around 2007. Anglers experimented with putting propellers on many different lures, which evolved into the sinking propbaits we know now as the swisher bait, screw-bait, and Bi-hadou (aka micro-wave).

Execution

1. The angler should make a long cast (longer than usual).
2. The angler should know the approx. depth of his desired location.
3. The angler then, can count the lure down (rate of fall is about 8 inches per second depending on line diameter and weight) to the chosen depth.
4. The spybaiter should count the lure down to several inches off the bottom.
5. Slowly retrieve the lure back; take around 2-3 second for each rotation of the reel.



After 560 hours of testing 1 lure, the Spinbait created for champions.

THE LURE OF CHAMPIONS

DUO's Invention of the Technique - Spybaiting

DUO's continued study in predator/prey relationship, pressured bass and neutral prey behavior helped DUO create methods to best present to wary bass. Born was the technique called Spybaiting with unprecedented Tournament Results.

Since 2013, Spybaiting has helped Bassmaster Elite pros and FLW Tour anglers alike win tournaments. Between 2013 and 2017, national TV and multimedia have captured professional bass anglers Spybaiting. Tournament anglers on all levels embrace the ultra finesse technique. It is now used in 70 countries. Spybaiting, the technique of silent capture is considered the world's fastest growing finesse technique.

Several Elite Series, BASS Opens, FLW Tour, and FLW Costa Series anglers have used the Spinbait 80, 80 G-Fix and 90 to conservatively amass over \$400,000 in just a few short years. This doesn't include the many high school, college, and weekend tournament anglers placing in the money.



— Bass pro Greg Gutierrez secured an FLW Costa Championship Win with one of the contributors to his victory being spybaiting with Spinbait 90 over point to find quality bass. Greg won with over 40 pounds of Spotted bass collecting a check for \$36,736!



— FLW pro Scott Dobson is crowned Champion of the FLW Costa event, "The Realis Spinbait caught my key fish". Dobson weighed in a 3-day total of over 68-pounds (Smallmouth) bass winning over 82,000\$.



— Another Co-Angler, Mike Muller nearly won the Bassmaster Open on Lake Erie. He finished 3rd Spybaiting. "My first spybait fish was a 3 pound Spotted bass on Smith Lake, AL. That's when I knew I would incorporate the technique into my tournament fishing".



— Bassmaster Co-Angler, Mandel Pettis credits his Bassmaster Angler Of Year success to spybaiting, reporting, "It has got me a big fish award and top finishes".



— Bassmaster North Open's Co-Angler Champion, Jeff Jenema won his event spybaiting earning over 23,000\$ with a 4-pound average. He also earned a big fish award bringing in a spybait bass that weighed 5-9 pounds!



— Jeff Miller had the winning weight over 47-pounds of bass spybaiting in a local event. His efforts earned over 10,000\$.

For spybaiting tips, tricks, and more, visit:

www.spybaiting.com



SPYBAITING
TECHNIQUE OF SILENT CAPTURE

REALIS

SPINBAIT80/90/80 G-Fix

SPINBAIT80

■Length/80mm (3-1/8" in) ■Weight/9.5g (3/8oz) ■Type/Sinking (Fixed Weight)
■Hook/#8X ■Ring/Hook Eye#2 ■Range/2.0~3.5m~ (7~12ft~)



The vehicle for the world's fastest growing finesse technique

The "Spybaiting" technique is considered an ultra-finesse hard bait technique requiring light line, long casts and in-line retrieves. Manipulation of the technique requires concentration and steady slow retrieves.

But the results are mind altering.

It is a finesse technique that catches big fish as well as numbers. It has recently hit the global shores and has been proven effective on a wide range of fish, both freshwater and saltwater.

The lure designed for this technique is the Realis Spinbait. DUO invites you to become familiar with the deadly finesse presentation known as "Spybaiting", the technique of silent capture.



Discover more at

www.spybaiting.com

SPINBAIT90

■Length/90mm (3-1/2" in) ■Weight/15g (1/2oz) ■Type/Sinking (Fixed Weight)
■Hook/#6X ■Ring/Hook Eye#2 ■Range/2.5~5.0m~ (8~17ft~)



SPINBAIT80 G-Fix

■Length/80mm (3-1/8" in) ■Weight/10.5g (3/8oz) ■Type/Sinking (Fixed Weight)
■Hook/#8X ■Ring/Hook Eye#2 ■Range/3.0~5.5m~ (10~18ft~)



GREAT LAKES LIMITED COLOR SERIES

SPINBAIT80/90/80 G-Fix



真虫 SHINMUSHI



Detachable Body

By removing the hook eyes, anglers will be able to separate the body to customize the lure depending on the given situation.



Wings

The wings were designed as a fixed feature instead of a free moving wing, for its function as a stopper. It also enables to the lure stage a "freestyle" action while retrieving.

SHINMUSHI SERIES



ACC3204 Aburazemi

ACC3213 Suzumebachi
※ Not available in Dekashinmushi

ACC3216 Joro Spider
※ Not available in Dekashinmushi

CCC3201 Tsukutsukuhoushi

CCC3202 Haruzemi



CCC3203 Semigara

CCC3218 Kinkame

CCC3219 Beetle

CCC3233 Sunset Moth **NEW**

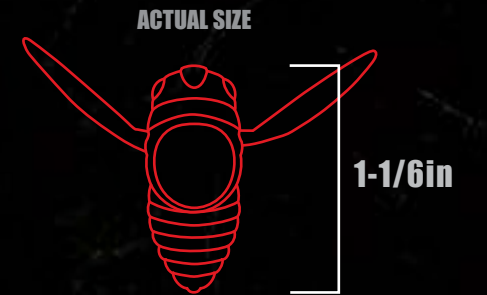
CCC3239 Slight Bug **NEW**

REALIS KOSHINMUSHI **NEW PRODUCT**

■Length/30mm (1-1/6" in) ■Weight/3.1g (1/8oz) ■Type/Floating (Fixed Weight) ■Hook/#12 ■Ring/#1

For selective situations when fish only have their eyes on small beetles

For fish on a fussy diet who are feeding on small beetles, there are situations where they won't use their mouths due to the volume of the Shinmushi. The Koshinmushi is a downsized model to visually motivate those picky eaters. After redesigning the thickness of the body, we were able to realize that unique sound of a beetle touching down on the surface. As the downsizing of the body will reduce its ability to appeal to a vast area, we installed a rattle sound.

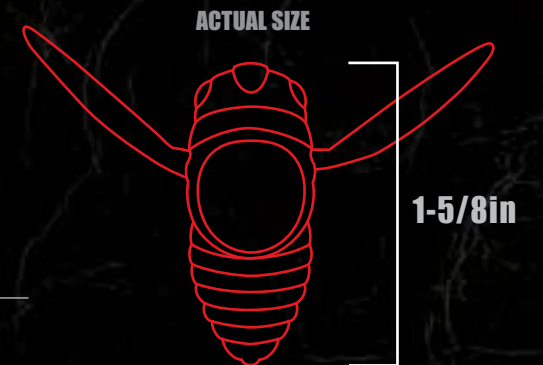


REALIS SHINMUSHI

■Length/40mm (1-5/8" in) ■Weight/5.7g (1/5oz) ■Type/Floating (Fixed Weight) ■Hook/#10 ■Ring/#1.5

The ultimate cicada lure packing the highest level of customization

The Realis Shinmushi has incorporated the actions of a "hard" body and "soft" rubber legs, creating a 3 dimensional pulsation that calls fish to the surface. This cicada imitation will induce bites with its silhouette and pulsation affect and will automatically induce bites while moving or just resting on the water.

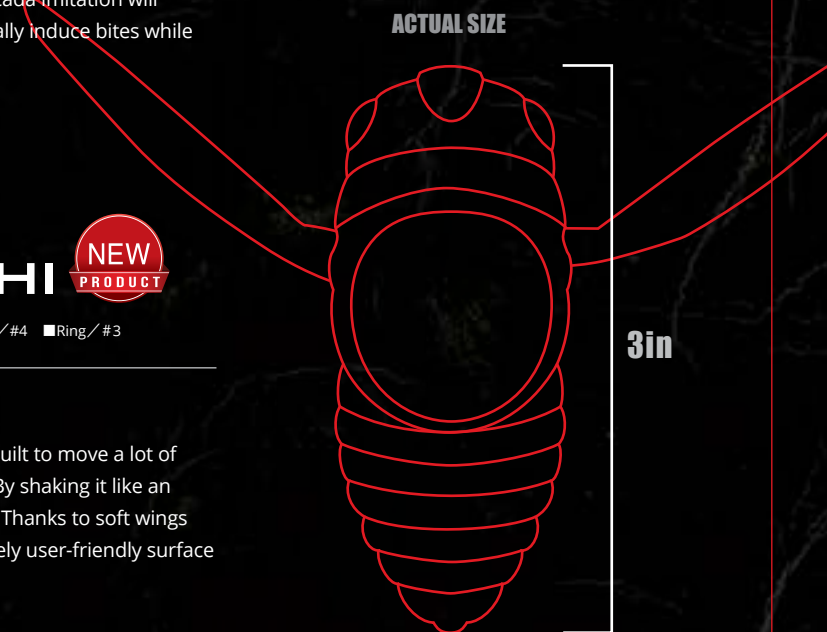


REALIS DEKASHINMUSHI **NEW PRODUCT**

■Length/75mm (3" in) ■Weight/33g (1-1/8oz) ■Type/Floating (Fixed Weight) ■Hook/#4 ■Ring/#3

Magnum crawler with a cicada DNA

The XXL version of the Shinmushi series comes crashing in a big way. Built to move a lot of water, it triggers fish which can't be caught on regular topwater lures. By shaking it like an insect, it produces a big ripple on the surface calling the fish from afar. Thanks to soft wings the crawling action is easy to initiate making Dekashinmushi a supremely user-friendly surface crawler, which is just as fun to fish.



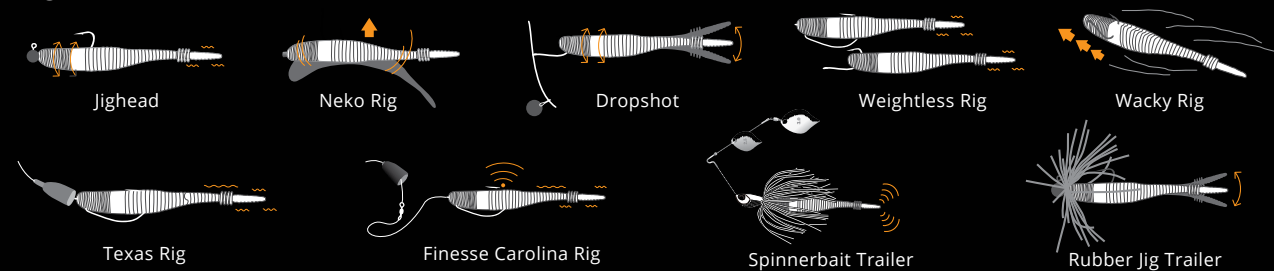
9 RIGS 1 LURE

REALIS V-TAILSHAD 3"/4" NEW PRODUCT

[3"] ■ Length / 3" in (76.2mm) ■ Pieces / 8 per pack

[4"] ■ Length / 4" in (93mm) ■ Pieces / 7 per pack

Rig Variations



Adaptable shad for multi-rigging and diverse techniques

Our first soft bait in the Realis brand was developed with the primary focus of finding the most suited material. Our ultimate goal was "Vitality". The R&D team developed the V-Tail's ballast system by selecting several types of salts with specific density and leeching ratios.

It goes without saying that this soft bait will effectively perform the basic actions of surface shaking and mid-range strolling, but can also enact the subtle natural movement in the tail at the moment it hits the bottom in the deep zone. Carefully created pliable profile with a quiver, dart action will replicate a lively bait in various conditions and eliminate fish hesitation to eat the lure.



Multibait Tail Design

One of secrets of V-Tail versatility is the originally designed tail which creates a baitfish like movement while swimming, imitating various bait in other areas too, f.e. replicating crustacean when at the bottom.

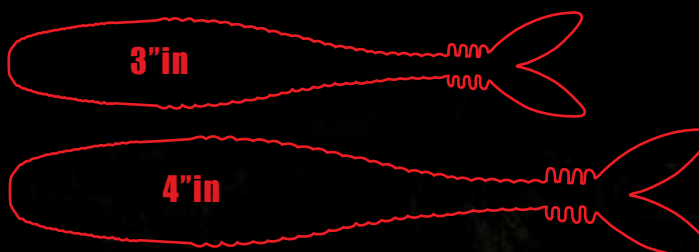


SECTIONAL VIEW

A Concave Design

The large concave design in the back section will not only control the rising and sliding of the bait during shaking, but also efficiently transfer a realistic pulsation towards the tail section.

Actual Size



V-TAILSHAD 3"/4" NEW



REALIS X Aaron Martens

MEET THE ADACHI AND AARON CONVERGENCE

Looking forward has never been an issue for DUO's team.
Looking towards an arena of great minds, great designs to be shared with the expert lure community
is an anticipation worth waiting for.



DUO HEADQUARTERS
YAIKU, JAPAN
Development Meeting & Field Testing

REALIS CRANK G87 15A / 20A

*Crankbait engineering beyond barriers,
beyond frontiers, beyond belief*

[15A] ■Length/87mm (3-1/3") ■Weight/34.0g (1-1/4oz)
■Type/Floating (Magnet Assisted Weight) ■Hook/#2X
■Ring/Line Eye#4+Hook Eye#4 ■Range/4.2~5.2m~ (14~16ft~)

[20A] ■Length/87mm (3-1/3") ■Weight/35.5g (1-1/4oz)
■Type/Floating (Magnet Assisted Weight) ■Hook/#2X
■Ring/Line Eye#4+Hook Eye#4 ■Range/5.5~6.3m~ (19~21ft~)

To set yourself apart from the herd in the crankbait market, a company has to take serious its understanding of hydro-dynamics, materials and components. The lure must also have excellent balance, castability, deflection, unique yet proven vibration and low line-tension during retrieves. DUO exceeded these challenges and set a bench mark in the process with Realis Crank G87, a true super crank and a pinnacle of lure engineering.

The need for a crankbait that could truly dive beyond the 15-foot and 20-foot mark and accurately reach its target has been deeply desired by professional anglers. To make a lure dive deep is not a huge challenge, but to make a lure dive and remain balanced, travel (like an arrow) through the air minimally influenced by cross winds and stay within strike zone longer with minimal reeling tension requires precise engineering. The G87 has walked right through what most have called the final barrier in crankbaiting and pioneered a new one.

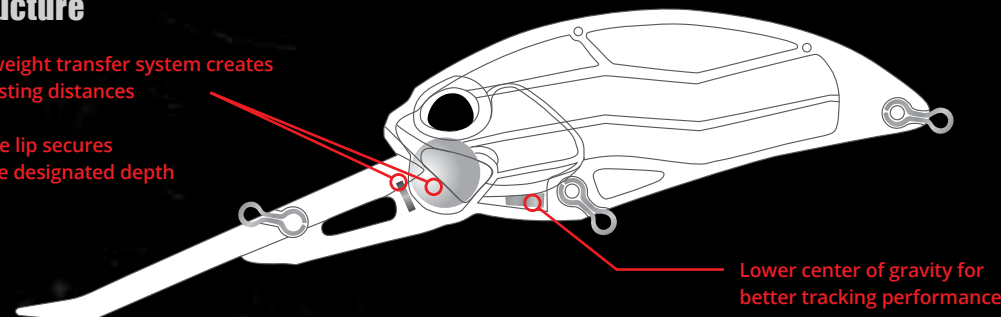
CRANK G87 15A / 20A



Inner Structure

Most advanced weight transfer system creates record setting casting distances

Elevated angle of the lip secures quick descend to the designated depth



*"It's not only the longest casting,
most accurate deep crankbait
for its size, it dives better,
is more versatile as well as
the most consistent deep crank
I have ever used."*

— AARON MARTENS

Aaron Martens



CRANK G87 15A / 20A

Aaron Martens Signature Colors

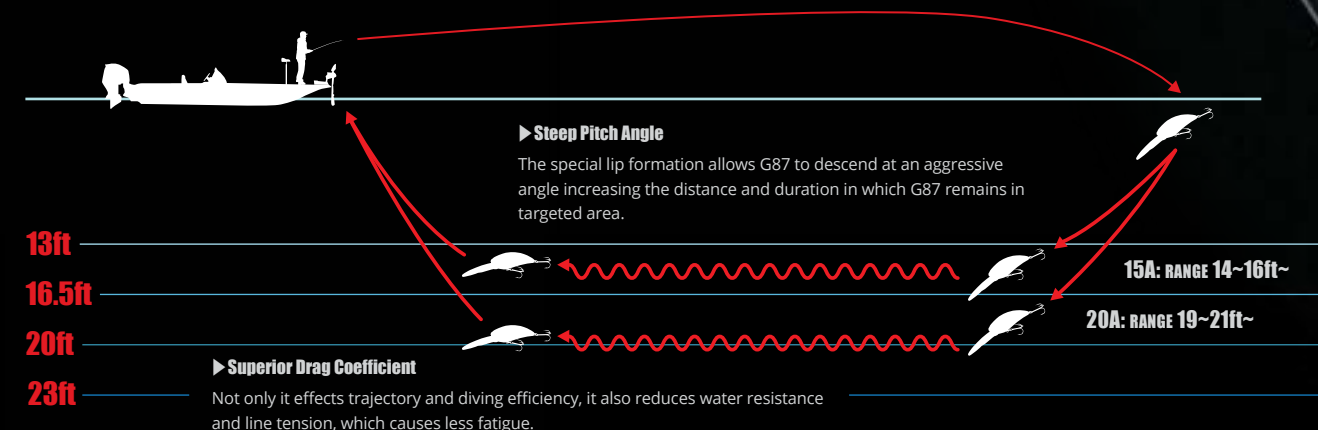
G87 has for several years belonged to Aaron's arsenal and now with the new signature series he will be putting his stamp on it.



Depth Chart

► Precision Trajectory

Due to its aerodynamic shape, G87 provides accuracy and better response in windy conditions meaning dramatically longer flight distances.



REALIS CRANK M62 5A · M65 8A/11A

The M-Line Series is the epitome of all terrain mobility, balance and recovery.

M62 5A has an advanced weight transfer system to ensure accurate placement and great wobble with very balanced-running action. "It's no secret now, the 5A casts like a dream, has a totally unique action and has proven itself again at Lake Martin" —Roy Hawk.

REALIS Hajime Murata

CRANK M62 5A

■Length/62mm (2-1/2" in) ■Weight/14.3g (1/2oz) ■Type/Floating (Magnet Assisted Weight)
■Hook/#5X ■Ring/Line Eye#2·Hook Eye#2 ■Range/1.2~1.8m (4~6ft)

M62 5A has an advanced weight transfer system to ensure accurate placement and great wobble with very balanced-running action.



Image above:
2nd Place Crank fest,
2018 Bassmaster Elite
at Lake Martin.

CRANK M65 8A

■Length/65mm (2-1/2" in) ■Weight/14g (1/2oz) ■Type/Floating (Fixed Weight) ■Hook/#4X
■Ring/Line Eye#3·Hook Eye#3 ■Range/2.0~2.5m (7~9ft)

Mid-diving M65 8A's sharp diving angle helps it reach it depth promptly and carefully tapered lip makes it run true and avoid obstacles.



CRANK M65 11A

■Length/65mm (2-1/2" in) ■Weight/16g (5/8oz) ■Type/Floating (Fixed Weight)
■Hook/#4X ■Ring/Line Eye#3·Hook Eye#3 ■Range/2.5~3.5m (10~12ft)

Both M65 crankbaits were loaded with performance but it is the complete package – integrity, castability, refined action and unique sound - offered in this series that is going to give the angler an advantage. You may be able to ascertain why the M65 was a five year project. There is no crankbait like it.



REALIS ONIMASU 188F/188S

[188F] ■Length/188mm (7-2/5" in) ■Weight/75g (2-3/4oz) ■Type/Slow Rise Floatation (Fixed Weight)
■Hook/#1/0X ■Ring/Hook Eye#4 ■Range/0.2~0.6m (0~2ft)

[188S] ■Length/188mm (7-2/5" in) ■Weight/78g (2-3/4oz) ■Type/Sinking (Fixed Weight)
■Hook/#1/0X ■Ring/Hook Eye#4 ■Range/0.4~0.8m (1~3ft)

*Pioneer of the Prometheus Project
- Taking realism to a new level*

The Prometheus Project began in 2013. Famed lure designer, Mr. Adachi, desired a unique platform which could accompany his design expertise and intricate understanding of lure actions, fusing them together with his advanced high resolution imaging and painting technology. The finished product is awe inspiring and shockingly realistic. The focus on this lure was to acquire a true S-curve motion distinctly different from saturated actions being depicted in the industry. This lure's vector (course of travel) is influenced by the lure's unique profile and fore-region. Its fluxion (or velocity) is dictated by line tension and reel retrieve. It is versatile with the intention of offering the swim motion through a variety of retrieves.

ONIMASU 188F/188S



REALIS

JERKBAIT100DR/100SP 110SP/120F

The new JDM jerkbait/ripbait standard

How do you know if you have a great jerkbait? What characteristics stand at the forefront? Professional anglers will tell you casting distance, balance, darting and flash are key considerations. Realis Jerkbait is a composition of desired traits and much more.

Realis Jerkbait line-up has the best of all worlds: balanced retrieve and specific body rotation to give off a pronounced wobble and precise gait during lure's tack and movement. The taller, flatter sides of the lure provide a larger profile, giving an impression of a bigger baitfish and providing wider bands of flashing to improve detection at a distance.

The multiple actions and versatility are capable due to high-end componentry hidden in its durable frame structure. DUO has truly gone beyond the angler's desire when it comes to refined jerkbait fishing.



JERKBAIT100DR

■Length/100mm (3-7/8" in) ■Weight/15.6g (1/2oz) ■Type/Suspending (Magnet Assisted Weight)
■Hook/#4X ■Ring/Line Eye#3+Hook Eye#2 ■Range/1.8~3.0m (6~10ft)



JERKBAIT100SP

■Length/100mm (3-7/8" in) ■Weight/14.5g (1/2oz) ■Type/Suspending (Fixed Weight)
■Hook/#5 ■Ring/Line Eye#2+Hook Eye#2 ■Range/0.8~1.5m (2~5ft)



JERKBAIT110SP

■Length/110mm (4-3/8" in) ■Weight/16.2g (5/8oz) ■Type/Suspending (Moving Weight)
■Hook/#6X ■Ring/Line Eye#3+Hook Eye#3 ■Range/0.8~1.6m (2~6ft)



JERKBAIT120F

■Length/120mm (4-3/4" in) ■Weight/17.1g (5/8oz) ■Type/Floating
■Hook/#5X ■Ring/Line Eye#2+Hook Eye#2 ■Range/0.8~1.0m (2~3ft)



REALIS

JERKBAIT120SP

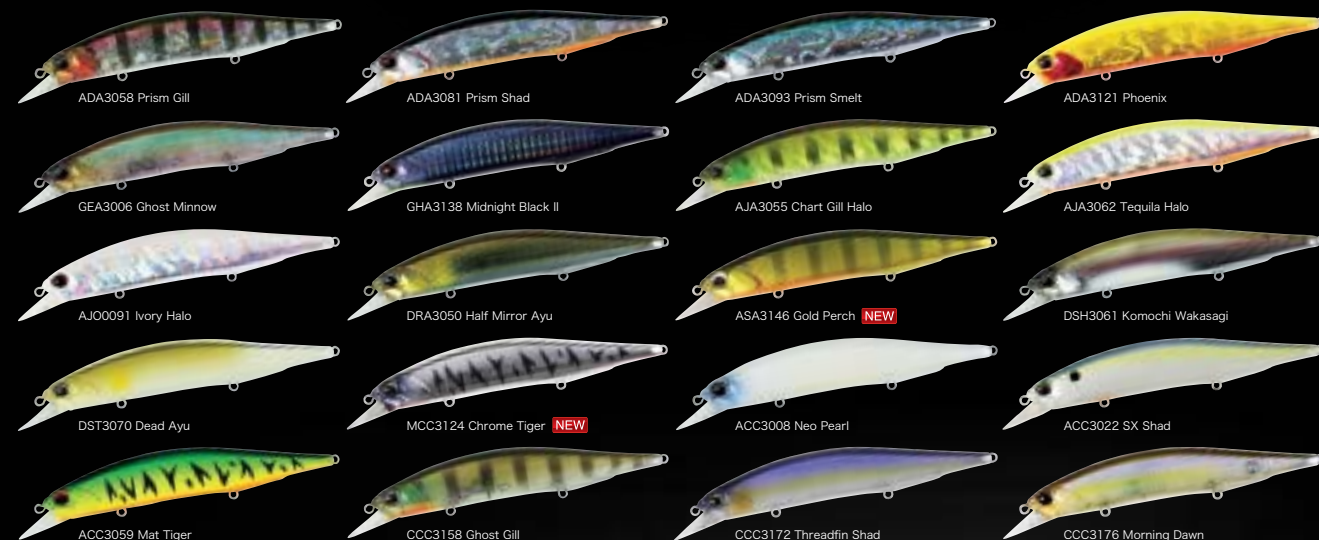
The flagship of Realis jerkbaits

Being known for its versatility to cover water quickly or to be target orientated on the go, has made the Realis Jerkbait 120 a super tool among big bait users.



JERKBAIT120SP

■Length/120mm (4-3/4" in) ■Weight/18g (5/8oz) ■Type/Suspending (Moving Weight)
■Hook/#5X ■Ring/Line Eye#3+Hook Eye#2 ■Range/1.0~1.8m (3~6ft)



REALIS

Aaron Martens

JERKBAIT100SP/110SP/120SP

Aaron Martens Signature Colors

Considered by many to be one of the greatest Elite anglers of all time, Aaron Martens has dazzled the world with his innate and natural ability to catch bass in any condition. It was also the Realis Jerkbait line-up which quietly aided Aaron to continue his success, and therefore the first set of colors to be unveiled with his "signature".



GREAT LAKES LIMITED SERIES

JERKBAIT110SP/120SP



Limited Series

REALIS

JERKBAIT100SP/120SP

LIMITED EDITIONS SW/PIKE

JERKBAIT100SP/120SP PIKE LIMITED

Gearing up for Esox sessions

[100SP] ■Length/100mm (3-7/8" in) ■Weight/14.5g (1/2oz)
■Type/Suspending (Fixed Weight) ■Hook/#4X
■Ring/Line Eye#3+Hook Eye#3 ■Range/0.8~1.5m (2~5ft)
[120SP] ■Length/120mm (4-3/4" in) ■Weight/17.8g (5/8oz)
■Type/Suspending (Moving Weight) ■Hook/#3X
■Ring/Line Eye#3+Hook Eye#3 ■Range/1.3~1.8m (4~6ft)

The new Pike Limited range is aimed at the iconic toothy predator and comes ready for battle - geared up with two heavy duty hooks and clothed in some of the most common pike baitfish patterns, it's ready to cause even more havoc on one of the world's finest water menace.



JERKBAIT120SP SW LIMITED

Saltwater version for unlimited salt life

■Length/120mm (4-3/4" in) ■Weight/18.2g (5/8oz) ■Type/Suspending (Moving Weight)
■Hook/#5X TIN ■Ring/Line Eye#3+Hook Eye#3 ■Range/1.0~1.8m (3~6ft)

The iconic jerkbait has now been adjusted for saltwater sessions with some of the most popular colors from Tide Minnow. Some unique patterns were added to further enhance the reputation of this cult lure also for shore and off-shore fishing.





REALIS VIBRATION 62/68/68 G-Fix

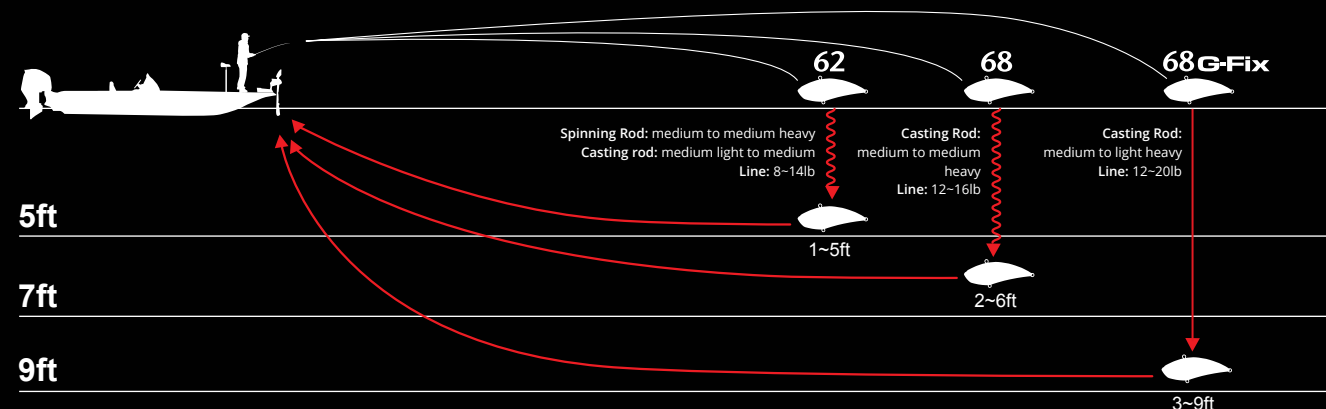
Explosive performance packed in the thinnest profile

The Realis Vibration series contain profiles that release a tight vibration, effortlessly. It's no mistake, this line of lipless are some of the thinnest, most compact crankbaits ever constructed.

Precision Aerodynamics: The Realis Vibration delivers un-imaginable shedding of lure-drag, allowing the lure to cut through water and air with speed and balance. The lures are designed to move through water columns with little resistance, at higher speeds. They are easy to cast significant distances, control and impart action. On the retrieve, the Realis Vibration has a deliberate path. It avoids fouling and behaves in a predictable fashion. Innovation and engineering meet in perfect balance.

Durability In Style: The unusually thin body design was created with the highest quality and technological injection-model processes. The Realis Vibration has exceptional durability, exceeding the industry standard. DUO's multi-layer painting process compliments the lure's beauty but also aids in protecting for wear factors and abrasion. The body design uses unique inner-ridge structure to maintain integrity during heavy use. This lipless crank is known to remain stable, even at super high speed retrieval.

Soft Signature Technology: The first observation professional anglers noticed was the soft signature vibration. This innovation was designed to help the competitor fish behind other "crankers" or on pressured water. When looking at the moving lure, the angler sees the rapid flutter. It's best described as a loud, silent lure, intensely vibrating.



VIBRATION 62/68

[62] ■ Length/62mm (2-1/2" in) ■ Weight/11g (3/8oz) ■ Type/Sinking (Fixed Weight)
■ Hook/#8X ■ Ring/Line Eye#2-Hook Eye#2

[68] ■ Length/68mm (2-5/8" in) ■ Weight/16g (5/8oz) ■ Type/Sinking (Fixed Weight)
■ Hook/#6X ■ Ring/Line Eye#2-Hook Eye#2

The Vibration 68, the flagship of our lipless line has a reputation of performing in amazing fashion. Weighing in at 5/8 oz, this compact heavy-weight crank cast like a bullet, with a scary realistic swim-action and profile. On a long cast it traces the desired depth but can be easily manipulated to trace shallower areas in seconds. Due to its low resistance, it is equally responsive, no matter the line diameter or rod size used.

The Vibration 62, carries many of the same qualities as its bigger brother the 68. Also utilizing the low resistance technology, it will cut water with ease but adds its own high-flutter rate when retrieved quickly or slowly. When retrieved, the realistic profile emulates a small minnow swimming. When pausing the retrieve, the 62 will flutter. Anglers enjoy this finesse ace when the bite gets tough.



VIBRATION 68 G-Fix

■ Length/68mm (2-5/8" in) ■ Weight/21g (3/4oz) ■ Type/Sinking (Fixed Weight)
■ Hook/#6X ■ Ring/Line Eye#2-Hook Eye#2

The Vibration 68 G-Fix was created to give anglers the optimum search bait in the nastiest of condition. The word G-Fix stands for pro-tuned, basically a super tuned lure. The 68 G-Fix weights 3/4oz yet is the size of some 1/4 and 3/8oz size lipless cranks. Casting in heavy wind during a tournament is no longer an issue. The G-Fix central cavity is occupied by a 6.5mm tungsten bearing and is surrounded by multiple 3.0mm micro bearings. This super tuned lure can be worked significantly faster than other lipless baits and will remain balanced. It falls rapidly to desired depths and shines when conditions turn for the worse. No longer does an angler have to cash in his lipless crank for a different presentation. The Vibration 68 G-Fix is the ultimate in search baits.



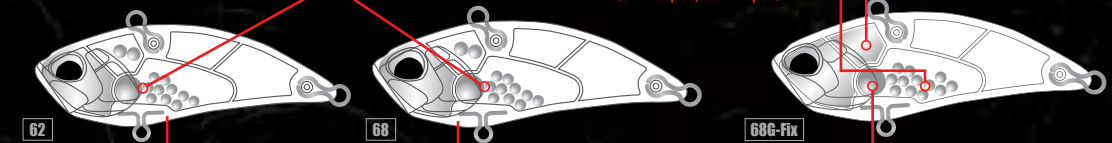
Actual Size & Inner Structure

The ultra thin body design is created by the highest technology in injection models

As the main rattle hits the hard spherical fixed weight in the belly section, it generates an additional 3rd pulsation effect

Molded insert lead weight
3.0mm tungsten bearings
(62 - 10 pcs, 68 - 12 pcs)

Substitution of steel weights for tungsten guarantees effortless and extremely accurate casting



It doesn't lose balance at super high speed retrieval and has a stable response

By aerodynamically designing the stomach area, it has stabilized its flight posture resulting in an improved casting ability

The shifting of the center of gravity to the front increases sinking rate and allows for deeper tracing

REALIS

PENCIL85/110/130

*Form, function and quality unified
in the surface fleet*

One of the most applauded lures in DUO's wide range, Realis Pencil sets a standard for all walking baits. The intelligently designed body houses a sphere on the chin of the lure, which makes walk the dog action effortless and also forces the lure to roll, flashing its gill plate. The innovative Pencil provides an angler with the ability to reach his target in a single cast, instantly start the movement and call the fish from greater distances.



PENCIL85

■Length/85mm (3-1/8" in) ■Weight/9.7g (3/8oz) ■Type/Floating (Moving Weight)
■Hook/#6X ■Ring/Hook Eye#2



PENCIL110

■Length/110mm (4-3/8" in) ■Weight/20.5g (3/4oz) ■Type/Floating (Moving Weight)
■Hook/#2X ■Ring/Hook Eye#3



PENCIL130

■Length/130mm (5-1/8" in) ■Weight/31.6g (1-1/8oz) ■Type/Floating (Moving Weight)
■Hook/#1X ■Ring/#4



REALIS

PENCIL110 WT/130 SW LIMITED

PENCIL110 WT / 130 SW LIMITED

[110 WT] ■Length/110mm (4-3/8" in) ■Weight/22.5g (3/4oz)
■Type/Floating (Moving Weight) ■Hook/#2X ■Ring/Line Eye#3 Hook Eye#3

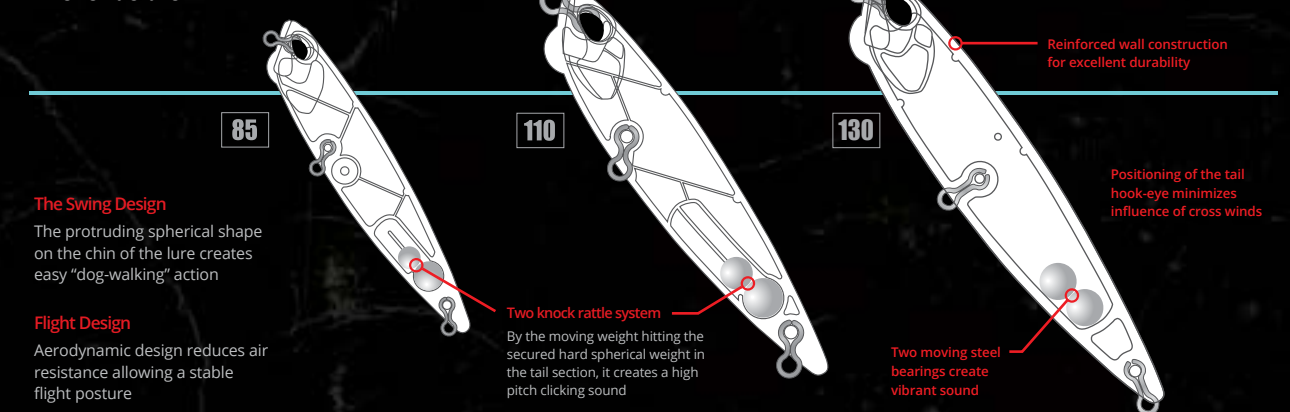
[130 SW] ■Length/130mm (5-1/8" in) ■Weight/31.6g (1-1/8oz)
■Type/Floating (Moving Weight) ■Hook/#1X ■Ring/#4

Saltwater tune for even more lethal Pencil sessions

Continuing in the trend of adjusting more to individual markets, we have introduced SW Limited version of Pencil, which will not be just a new color range, but also a weight tune to better handle the rough waters. The weight has been adjusted, offsetting some of the buoyancy for easier handling in waves and rough waters. The additional weight inclusion even further improved the already often praised castability making it that much more of a lethal weapon even in saltwater.



Inner Structure



REALIS POPPER64

Ultimately versatile surface tool

Realis Popper 64 is strictly about business. It fires accurately and arrives to its destination effortlessly. Just pick your target and catch your fish. It's the 'run-n-gun', making pattern fishing easy.



- WHITE
- YELLOW
- BROWN

A feather is tied to the rear hook in three variations depending on the body color.

REALIS PENCILPOPPER110/148

[110] ■Length/110mm (4-3/8" in) ■Weight/18g (5/8oz) ■Type/Floating (Fixed Weight)
■Hook/#4X ■Ring/Hook Eye#3

[148] ■Length/148mm (5-7/8" in) ■Weight/40g (1-3/8oz) ■Type/Floating (Moving Weight)
■Hook/#1/0X ■Ring/Hook Eye#4

Maintain your long distance relationship with trophy fish

Meet a top water lure with dual-purpose actions. The swim actions are effortless, the sound resonates well, the profiles are attractive and the color patterns are proven. The PencilPopper series is another advancement in lure fishing and is swollen with attributes others have yet to experience. We just made top water fishing better.

PENCILPOPPER110/148



PENCILPOPPER110/148 SW LIMITED



REALIS ROZANTE63SP/77SP

[63SP] ■Length/63mm (2-1/2" in) ■Weight/5g (1/6oz) ■Type/Suspending (Magnet Assisted Weight)
■Hook/#10 ■Ring/Line Eye#1.5+Hook Eye#2 ■Range/0.6~0.8m (2~3ft)

[77SP] ■Length/77mm (3-1/8" in) ■Weight/8.4g (3/8oz) ■Type/Suspending (Magnet Assisted Weight)
■Hook/#8 ■Ring/Line Eye#3+Hook Eye#3 ■Range/0.7~0.9m (2~3ft)

A finesse jerkbait with superior targeting and fluid darting

The bulky body of Rozante has been fitted with a magnet-assisted moving weight system for superb castability even on light gear. Short pitched finessed action imitates fleeing baitfish effortlessly.

ROZANTE63SP/77SP



REALIS SPIN

NEW
PRODUCT

[5g] ■Length/30mm (1-1/8" in) ■Weight/5g (1/6oz) ■Type/Sinking (Fixed Weight)
■Hook/#14 ■Ring/Line Eye#1+Hook Eye#1

[7g] ■Length/35mm (1-3/8" in) ■Weight/7g (1/4oz) ■Type/Sinking (Fixed Weight)
■Hook/#14 ■Ring/Line Eye#1+Hook Eye#1

Conquer the field! A tail-spin type lure is ready to stimulate the natural instincts of the fish

Fishing land based or from the boat, a new tail-spin type lure is ready to search a vast area. The compact body size enables the lure to travel great distances when casting. Its classical spin-tail creates a smooth rotation while the weak rolling of the body stimulates a natural bite from the bass. The lure produces a lively pulsation of a bait while maintaining an appropriate drag for a more linear usage. It is loaded with two hooks to effectively capitalize on the short bites of the tough conditions in cold conditions.

REALIS SPIN



REALIS SHAD52MR / 59MR / 62DR

Tough Bite? School is in session.

This group of shad means, "school is in session".

If you're looking for a deadly finesse lure able to cover several depth columns, you've found it

- Welcome to the Realis Shad series. This trio of Shad; 52MR, 59MR and 62DR; is truly finesse fishing at its best.

Most petite baits are extremely difficult to manage due to their weight and profile, however with Realis Shad, an elaborate weight transfer system utilizing magnets to seat the ballast has been installed into the cavity for supreme castability.



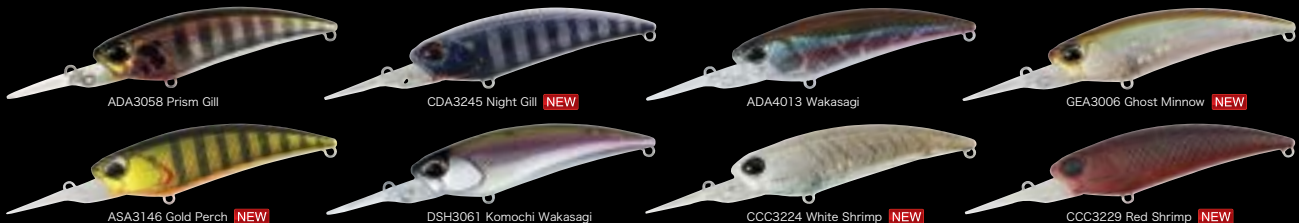
SHAD52MR

■Length/52mm (2" in) ■Weight/3.8g (1/8oz) ■Type/Suspending (Magnet Assisted Weight) ■Hook/#10 ■Ring/Line Eye#1-Hook Eye#1 ■Range/0.8~1.5m (2~5ft)



SHAD59MR

■Length/59mm (2-3/8" in) ■Weight/4.7g (1/6oz) ■Type/Suspending (Magnet Assisted Weight) ■Hook/#10 ■Ring/Line Eye#1-Hook Eye#1.5 ■Range/1.0~2.0m (3~7ft)



SHAD62DR

■Length/62mm (2-1/2" in) ■Weight/6.0g (1/4oz) ■Type/Suspending (Magnet Assisted Weight) ■Hook/#8 ■Ring/Line Eye#1.5-Hook Eye#1.5 ■Range/1.5~2.5m (5~8ft)



REALIS MINNOW80SP

■Length/80mm (3-1/8" in) ■Weight/4.7g (1/6oz) ■Type/Suspending (Fixed Weight) ■Hook/#10 ■Ring/Line Eye#2-Hook Eye#2 ■Range/0.4~0.8m (1~3ft)



● Nature Design



FANG·OPS GOING BEAST MODE

Utilizing DUO's highly advanced molding technology, the lure designs were headed by DUO CEO and Chief designer Masahiro Adachi in close collaboration with Kazuhiro Uyama (One Bite One Fish), a predator fishing icon, who provided invaluable insight based on his vast global experience and know-how.

Contrary to the notion of JDM (Japanese Domestic Model) being associated with finesse usage, Fang Ops lures were created specifically for daring anglers around the world, with a toughness and durability that could match any monster anytime, anywhere.

Keeping true to DUO's motto "There is Only One", the standard-setting Fang Ops lures will be a must-have for the predator angler going beast mode.

PRODUCED BY
MASAHIRO ADACHI & KAZUHIRO UYAMA

Discover more at



www.fangops.com



www.facebook.com/FangOps

REALIS FANGBAIT SR/DR EDITIONS

The heavy duty weapon for "Going Beast Mode"

FANGBAIT120SR/140SR

[120SR] ■Length/120mm (4-3/4" in) ■Weight/25.8g (7/8oz) ■Type/Floating (Fixed Weight) ■Hook/#1X
■Ring/Hook Eye#5.5 ■Range/0.8~1.0m (2~3ft) ■Price/ 21\$/19€

[140SR] ■Length/140mm (5-1/2" in) ■Weight/38g (1-3/8oz) ■Type/Floating (Fixed Weight)
■Hook/#1/0X ■Ring/Hook Eye#5.5 ■Range/0.8~1.0m (2~3ft)
■Price/ 23\$/21€

FANGBAIT120DR/140DR

[120DR] ■Length/120mm (4-3/4" in) ■Weight/26.7g (1oz)
■Type/Floating (Magnet Assisted Weight)
■Hook/#1X ■Ring/Hook Eye#5.5
■Range/2~2.8m (6~9ft) ■Price/ 21\$/19€

[140DR] ■Length/140mm (5-1/2" in)
■Weight/41.2g (1-1/2oz)
■Type/Floating (Magnet Assisted Weight)
■Hook/#1/0X ■Ring/Hook Eye#5.5
■Range/2.7~3.4m (9~12ft) ■Price/ 23\$/21€

FANGBAIT SERIES



What do you tie on your rod when you plan to target a 20kg Papuan bass, 40kg barramundi or 100kg arapaima? What tackle generates enough confidence to tie it on even when fighting a world class record fish? We offer you the answer – the Fangbait series.

Developed by Kazuhiro Uyama and tested on his many trips to chase the greatest of world's predators, Fangbait aims to become a staple in "beast hunters" tackle boxes.

As a pioneering model for Fang Ops brand, it represents the concept of building some of the toughest lures in the world to the fullest.

FANG·OPS
GOING BEAST MODE

REALIS FANGBAIT SR/DR LIMITED EDITIONS PIKE/SW

FANGBAIT120SR/140SR PIKE LIMITED

[120SR] ■Length/120mm (4-3/4" in) ■Weight/25.8g (7/8oz) ■Type/Floating (Fixed Weight)
■Hook/#1X ■Ring/Hook Eye#5.5 ■Range/0.8~1.0m (2~3ft)

[140SR] ■Length/140mm (5-1/2" in) ■Weight/38g (1-3/8oz) ■Type/Floating (Fixed Weight)
■Hook/#1/0X ■Ring/Hook Eye#5.5 ■Range/0.8~1.0m (2~3ft)

Commence "Operation: Esox!"

Lock in on pike fangs!



FANGBAIT120DR/140DR SW LIMITED

[120DR] ■Length/120mm (4-3/4" in) ■Weight/27.5g (1oz) ■Type/Floating (Magnet Assisted Weight + Rattle)
■Hook/#1X ■Ring/Hook Eye#5.5 ■Range/2~2.8m (6~9ft)

[140DR] ■Length/140mm (5-1/2" in) ■Weight/42.1g (1-1/2oz) ■Type/Floating (Magnet Assisted Weight + Rattle)
■Hook/#1/0X ■Ring/Hook Eye#5.5 ■Range/2.7~3.4m (9~12ft)

Rattle the bluewaters!

Dive down to those trophy fish.



REALIS FANGPOP105/120

NEW PRODUCT

Versatile and Tough. Bring the Beasts up to the Surface!

- [105] ■Length/105mm (4-1/8" in) ■Weight/24.5g (7/8oz)
■Type/Floating (Fixed Weight) ■Hook/#2X ■Ring/#4.5
- [120] ■Length/120mm (4-3/4" in) ■Weight/30g (1-1/8oz)
■Type/Floating (Fixed Weight) ■Hook/#1X ■Ring/#5.5

After conquering shallow and deep waters with Fangbaits, Fang Ops is ready to rule the surface too. Introducing FangPop, the new topwater master. Even with light twitching, FangPop splashes the water well accompanied by a sweet pop sound to attract the predators to reach out. Versatile enough to be used for GT-style popping, straight fast retrieve as well as staging a crisp walk the dog, FangPop proves its all-rounder status. Being fully wired-through at that, it makes it the only one of its kind. Get ready to call the beasts to meet you at the surface!

FANGPOP105/120



FANGPOP105/120 SW LIMITED



THE BEASTS AWAIT
PROTOTYPES FOR THE FANG LINE



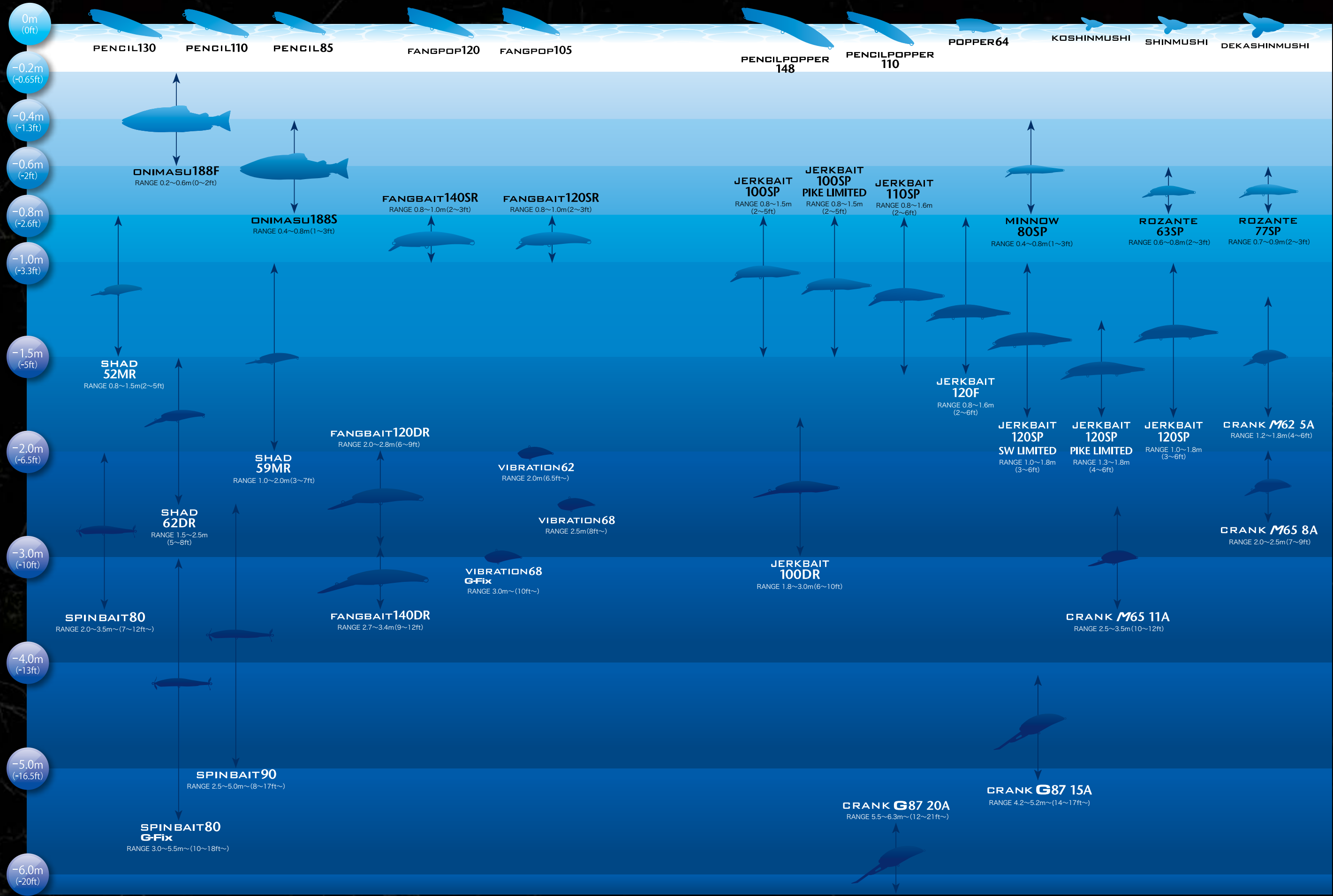
FANG SHAD TAIL
Soft Bait

FANG STICK
Topwater

FANG GIANT
Swimbait

The range of beast tamers continues to grow with new lure to cover the topwater, swimbait section and start of Fang soft bait revolution.

FANG·OPS
GOING BEAST MODE



REALIS DEPTH CHART

The depth of the lures might vary depending on conditions. Please use the depth chart as a general guide.

REALIS ACTUAL SIZE

130mm
PENCIL130

110mm
PENCIL110

64mm
POPPER64

85mm
PENCIL85

90mm
SPINBAIT90

80mm
SPINBAIT80

100mm
JERKBAIT100SP

110mm
JERKBAIT110SP

120mm
JERKBAIT120F JERKBAIT120SP

100mm
JERKBAIT100DR

140mm
FANGBAIT140SR

120mm
FANGBAIT120SR

140mm
FANGBAIT140DR

120mm
FANGBAIT120DR

62mm
SHAD62DR

59mm
SHAD59MR

52mm
SHAD52MR

148mm
PENCILPOPPER148

110mm
PENCILPOPPER110

80mm
MINNOW80SP

120mm
FANGPOP120

105mm
FANGPOP105

SPIN 7g

SPIN 5g

77mm
ROZANTE77SP

63mm
ROZANTE63SP

87mm
CRANK **G**87 20A

87mm
CRANK **G**87 15A

65mm
CRANK **M**65 11A

65mm
CRANK **M**65 8A

62mm
CRANK **M**62 5A

68mm
VIBRATION68

62mm
VIBRATION62

DUO ORIGINAL ACCESSORIES

HEADWEAR



DUO Flexfit Cap
■Color : Black・Black／Navy・White／Black・White／Royal Blue／Navy・White・Navy



NEW DUO Snapback
■Color : Camouflage／Black／Heather Grey・Black

LIMITED DUO "Only One" Snapback Limited
■Color : Camouflage・Black

NEW Realis Trucker
■Color : Red／Black

NEW Realis Snapback
■Color : Red／Black



DUO Trucker
■Color : Black／Grey Camo／Green Camo

NEW DUO Beanie
■Color : Heather Grey／Dark Grey／Black

NEW DUO Wide Brim Hat
■Color : Khaki

APPAREL



NEW DUO Windbreaker Jacket
■Size : XS・S・M・L・XL ※US Sizes ■Color : Black／Grey Camo

DUO × STORMR
International FOUL WEATHER GEAR

DUO X STORMR Collaboration UV protection shirt with the Fang Ops "Beast" motif



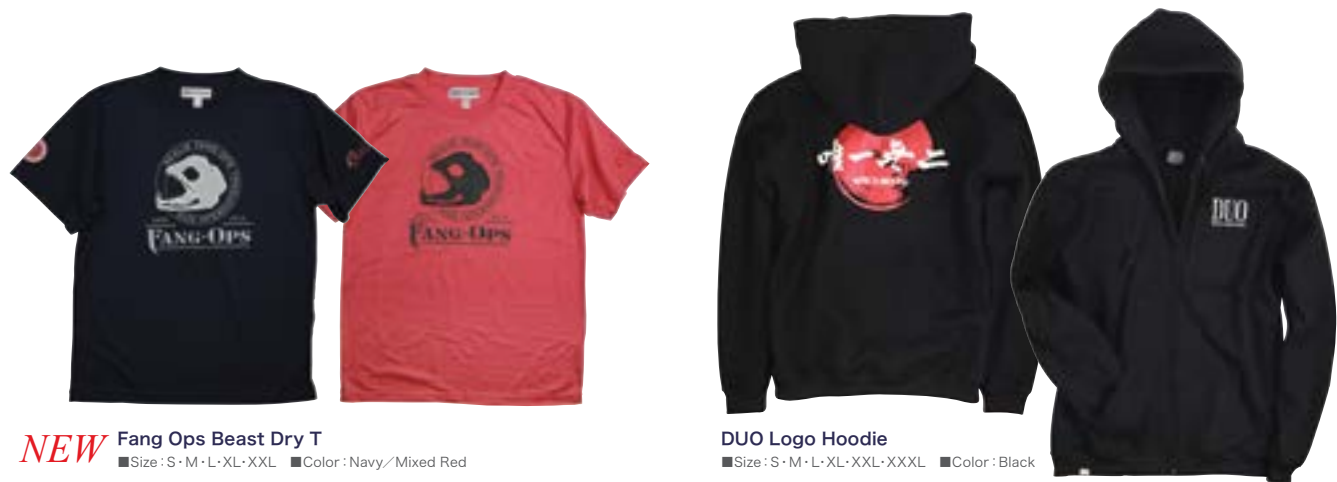
NEW DUO X Stormr Beast Performance Long T
■Size : S・M・L・XL・XXL ※US Sizes ■Color : Blue・Grey／White・Grey



NEW DUO "Only One" Long T
■Size : S・M・L・XL・XXL ※US Sizes
■Color : Navy・Grey／Ash・Dark Grey

NEW DUO "Only One" T-Shirt
■Size : S・M・L・XL・XXL ※US Sizes
■Color : Ash／Charcoal

"Only One" series with the names of DUO brands in the shape of a fish.



NEW Fang Ops Beast Dry T
■Size : S・M・L・XL・XXL ■Color : Navy／Mixed Red

DUO Logo Hoodie
■Size : S・M・L・XL・XXL・XXXL ■Color : Black



NEW Going Beast Mode Dry T
■Size : S・M・L・XL・XXL ■Color : White／Black

NEW DUO "There Is Only One" Dry T
■Size : S・M・L・XL・XXL
■Color : Navy／White／Black

ACCESSORIES



NEW DUO UV Headwear
■Color:Black Camo/White Camo/Blue Camo

NEW DUO UV Arm Guard
■Color:Black Camo/White Camo/Blue Camo



DUO Lure Case
■Size : 205×145×40mm
■Color : Black/White

DUO Reversible Lure Case
■Size : 86・100・145 **NEW SIZE**・165
■Color : Black

NEW
DUO Reversible Lure Case DD86
■Size : 140×104×32mm
■Color : Green・Light Green



Cross-Lock Snap
■Size : #1・#2・#3
■Quantity:10pcs

Split Ring
■Size/Quantity : #1/38pcs・1.5/20pcs・#2/34pcs・#3/24pcs・#4/18pcs・#5/12pcs



Spool Band
■Size : S・M

Cover Ring Rod Belt
■Size : M・L

Smart Rod Carrier
■Should Strap Length : 750~1300mm

Rod Belt
■Size : 40×390mm and 50×450mm



NEW
Fang Ops "Beast" Cut-Out Sticker
■Size:100×100mm
■Color:Red



"There is Only One" Sticker
■Size:148×112mm
■Color:Black/White



DUO Logo Sticker
■Size:84×84mm ■Color:White

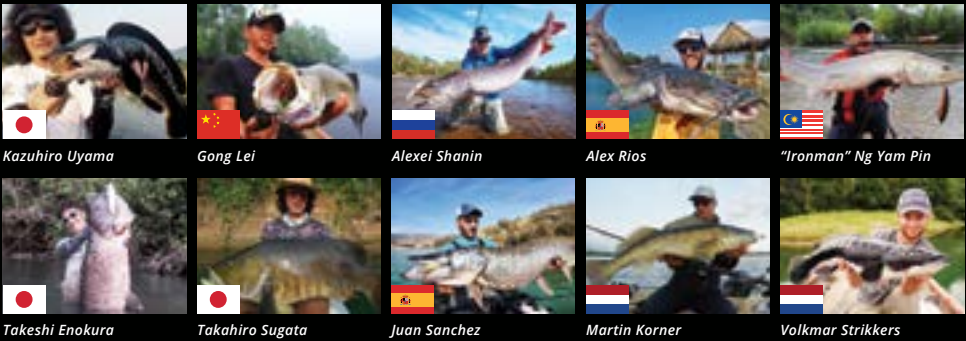
DUO Logo Cut-Out Sticker
■Logo Size:165×182mm ■Color:White



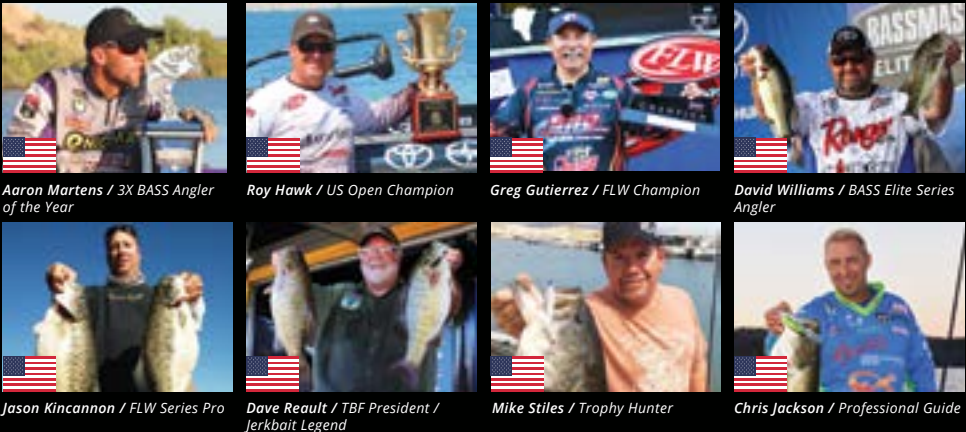
REALIS Logo Cut-Out Sticker
■Logo Size : 42×140mm
■Color:White/Red

WARNING ⚠
■Please do not use for purposes other than fishing. ■Please keep out of the reach of children ■The hooks are very dangerous. Please use caution.
■When casting a lure, please be sure to check the safety of the surroundings. ■When the lure and the package are no longer needed, please dispose responsibly.

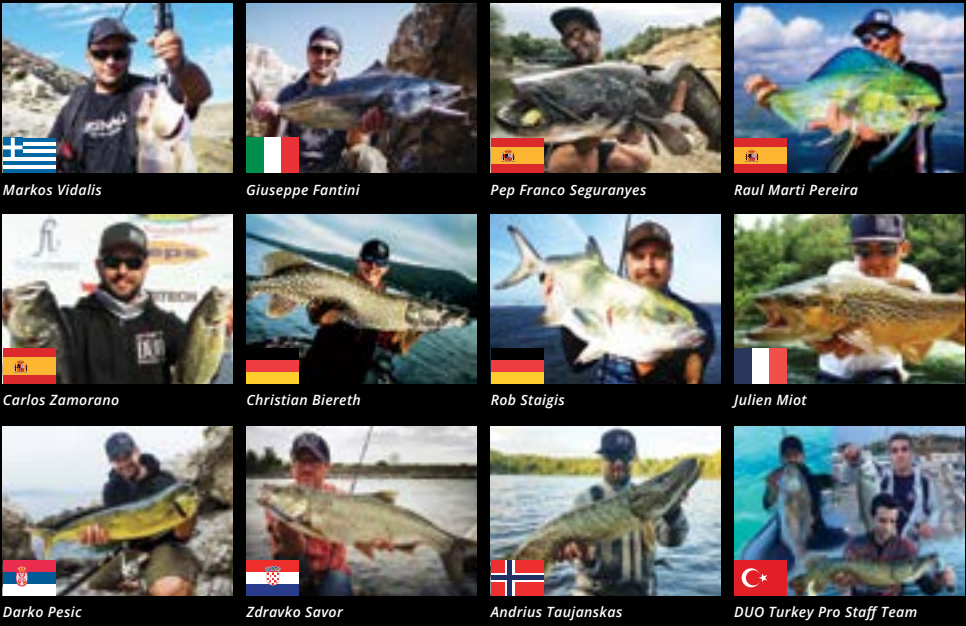
FANG OPS



USA



EUROPE



ASIA & OCEANIA



LATIN AMERICA

